



Welcome to Evolved Living

About EVE Park

Imagine a residential community designed around abundant green energy. Where two-car garages do not separate you from your neighbours. Where community greenspace is prioritized over driveways and fenced yards. Where you're living in a park, not a parking lot.

EVE - Electric Vehicle Enclave - Park is a new kind of residential community that shows us how we can live in a way that changes our relationship with the planet and with one another. The project will be built in the "forest city" of London, Ontario within the greater West5 community, one of North America's largest net-zero energy communities. It is connected to the Thames River park area, with access to many biking trails, golf courses — ideal for an active, outdoor lifestyle.

While other developments have sought out green energy solutions, EVE Park is revolutionary in its approach to community, its attention to exceptional quality of life, its inspiring design, its integration of nature and technology, and especially its forward-thinking approach to personal transportation.

*EVE Park is the first community of its kind:
a net-zero energy community designed for the future.*

84 Units Total

4

ONE BEDROOM UNITS

Woodfern

60

TWO BEDROOM UNITS

Bergamot, Indigo and Gooseberry ground floor, and Sumac elevated 2 bedrooms

20

THREE BEDROOM UNITS

Sycamore with Maple and Ironwood upgrades, and Beech elevated 3 bedrooms

Features & Finishes



**Sustainable,
Natural & Non-Toxic
Materials Throughout
the Home**



**Choice of Finish
Schemes Curated by
Interior Designers**



**Certified
Engineered Hardwood
Flooring**



**Air-Tight Net-Zero
Construction for
Temperature & Pollution
Management**



**Custom-Crafted
Environmentally
Friendly Kitchen &
Bathroom Millwork**



**Under-Cabinet
Kitchen Lighting**



**Canadian-Made
Quartz Countertops &
Coordinated Ceramic
Tile Backsplashes**



**High-Speed Fiber
to Each Suite. Download
at 1.5Gbps.**



**Porcelain Tiling
on Bathroom
Floors & Walls**



**Modern
Water-Saving
Plumbing Fixtures**



**Smart & Energy
Efficient Panasonic
Panel-Ready
Appliances**



**Smart Thermostat with
Advanced Controls**



**Enhanced Connected
Home Energy
Management & Security
Monitoring**

Upgrade Option



**Home
Media Package**

Upgrade Option



**Healthy Home
Package for
Superior Air &
Water Quality**

Upgrade Option



**Fresh Air Machines
(ERVs) for Fresh &
Filtered Air**



**LED Lighting with
Smart In-Suite
Switches**



**Large Energy-
Efficient Windows
for Abundant
Natural Light**



Suites

Live well, lightly.

Woodfern

ONE BEDROOM



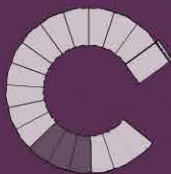
KEY PLAN

THE WOODFERN / AREA: 743 FT² / EXTERIOR: 164 FT²

Interior and exterior configuration varies by unit and specifications are subject to change without notice. See a sales representative for further information. Actual usable floor space may vary from the stated floor area.

Bergamot

TWO BEDROOM TOWNHOUSE



KEY PLAN

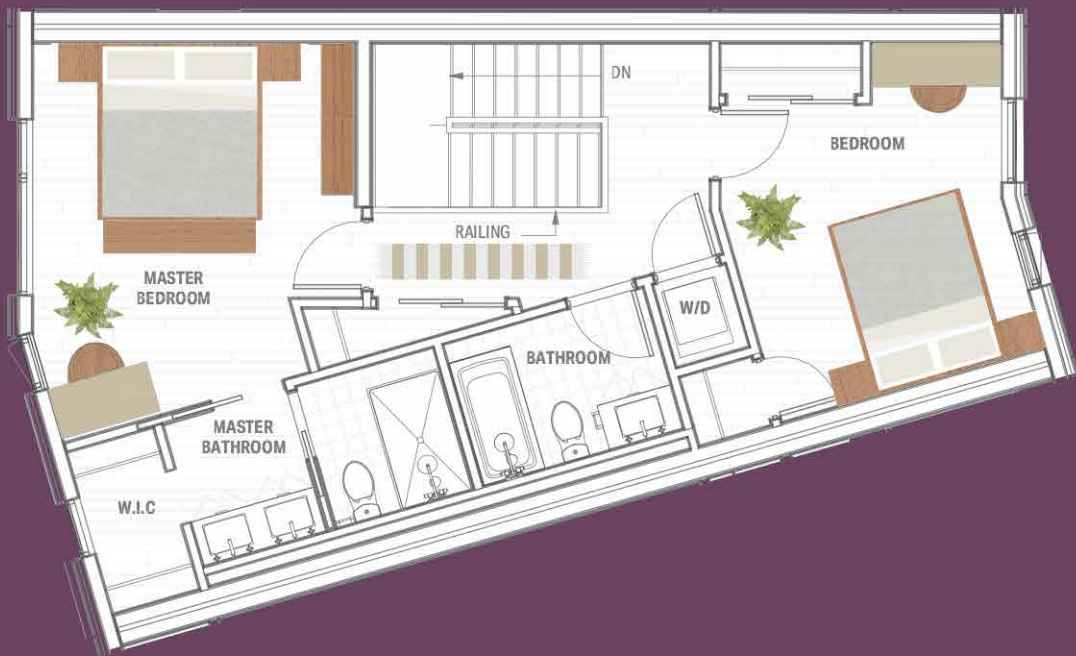
AREA: 1486 FT² / EXTERIOR: 164 FT²

Interior and exterior configuration varies by unit and specifications are subject to change without notice. See a sales representative for further information. Actual usable floor space may vary from the stated floor area.

GROUND FLOOR



SECOND FLOOR



Gooseberry

TWO BEDROOM
TOWNHOUSE

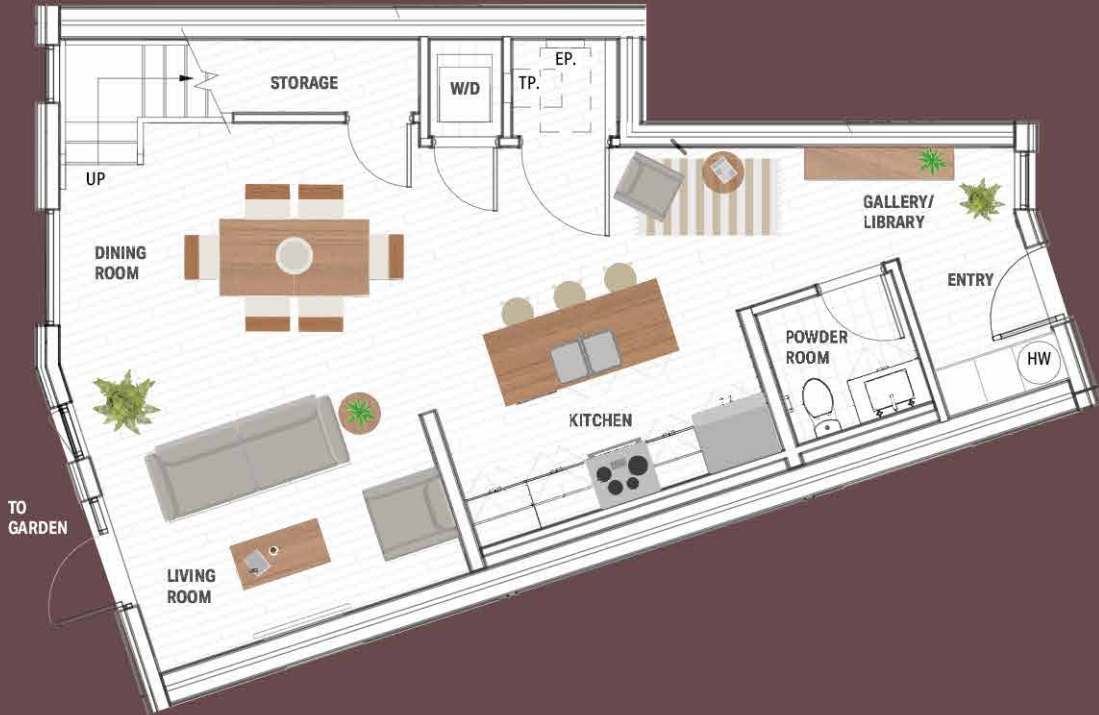


KEY PLAN

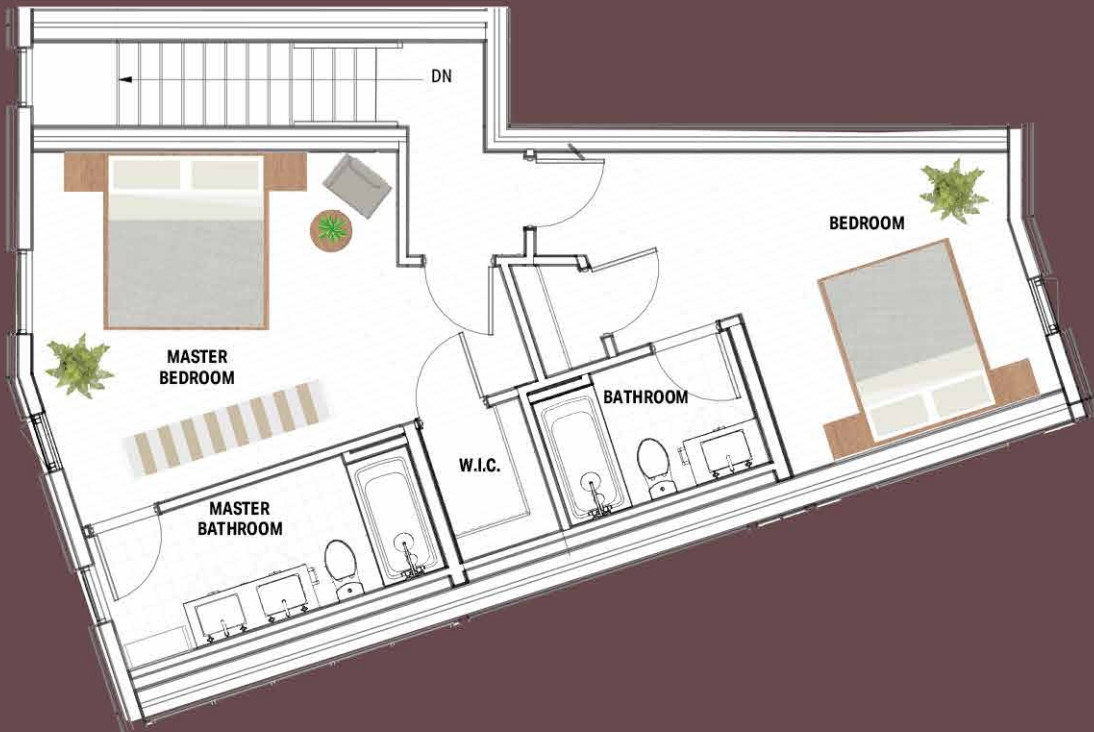
AREA: 1498 FT² / EXTERIOR: 155 FT²

Interior and exterior configuration varies by unit and specifications are subject to change without notice. See a sales representative for further information. Actual usable floor space may vary from the stated floor area.

GROUND FLOOR

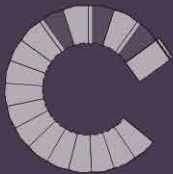


SECOND FLOOR



Indigo

TWO BEDROOM TOWNHOUSE

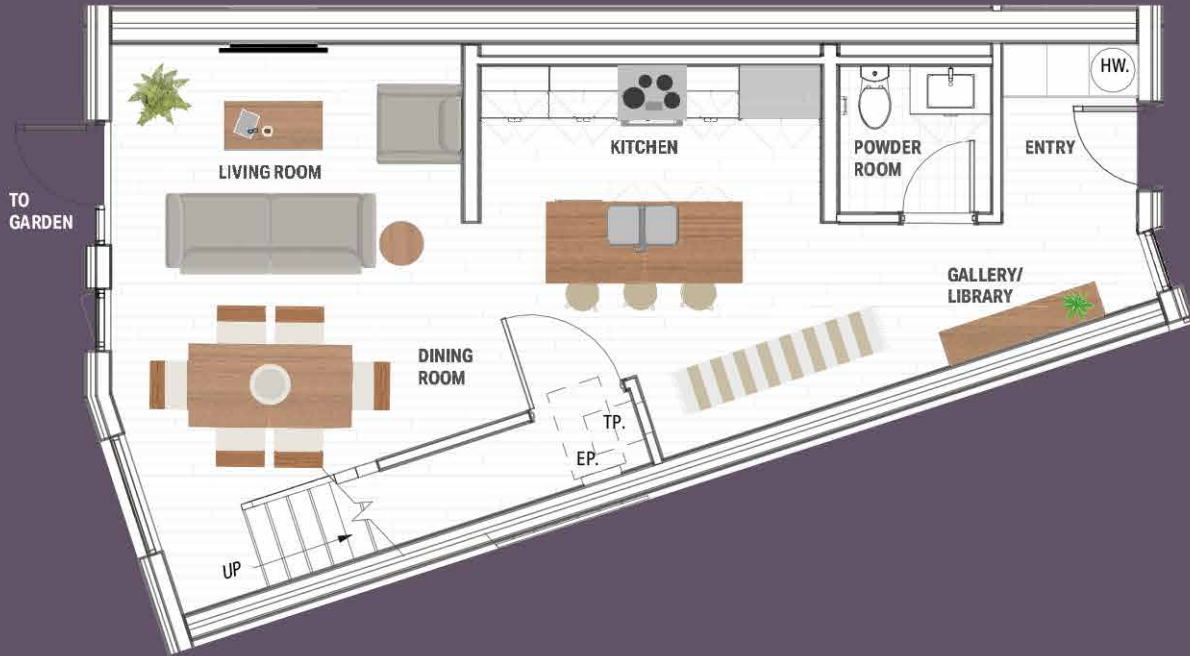


KEY PLAN

AREA: 1312 FT² / EXTERIOR: 155 FT²

Interior and exterior configuration varies by unit and specifications are subject to change without notice. See a sales representative for further information. Actual usable floor space may vary from the stated floor area.

GROUND FLOOR

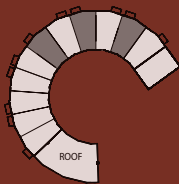


SECOND FLOOR



Sumac

ELEVATED TWO BEDROOM TOWNHOUSE

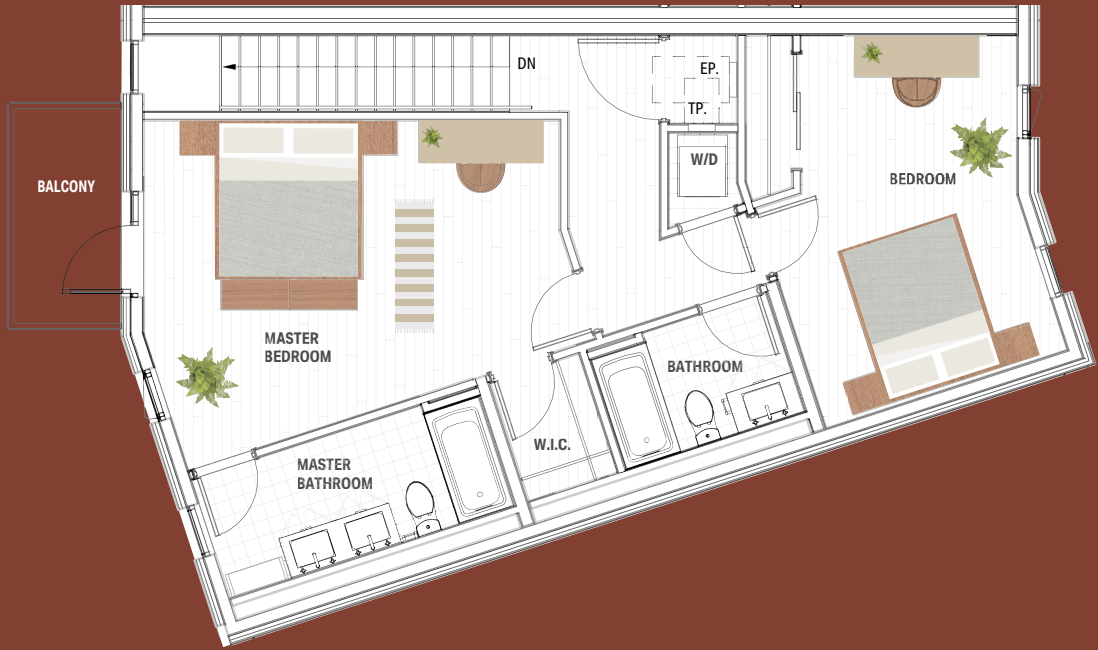


KEY PLAN

THE SUMAC / AREA: 1850 FT² / EXTERIOR: 96 FT²

Interior and exterior configuration varies by unit and specifications are subject to change without notice. See a sales representative for further information. Actual usable floor space may vary from the stated floor area.

FOURTH FLOOR

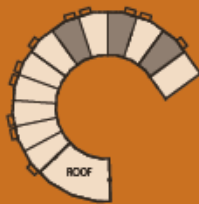


THIRD FLOOR



Beech

ELEVATED THREE BEDROOM TOWNHOUSE

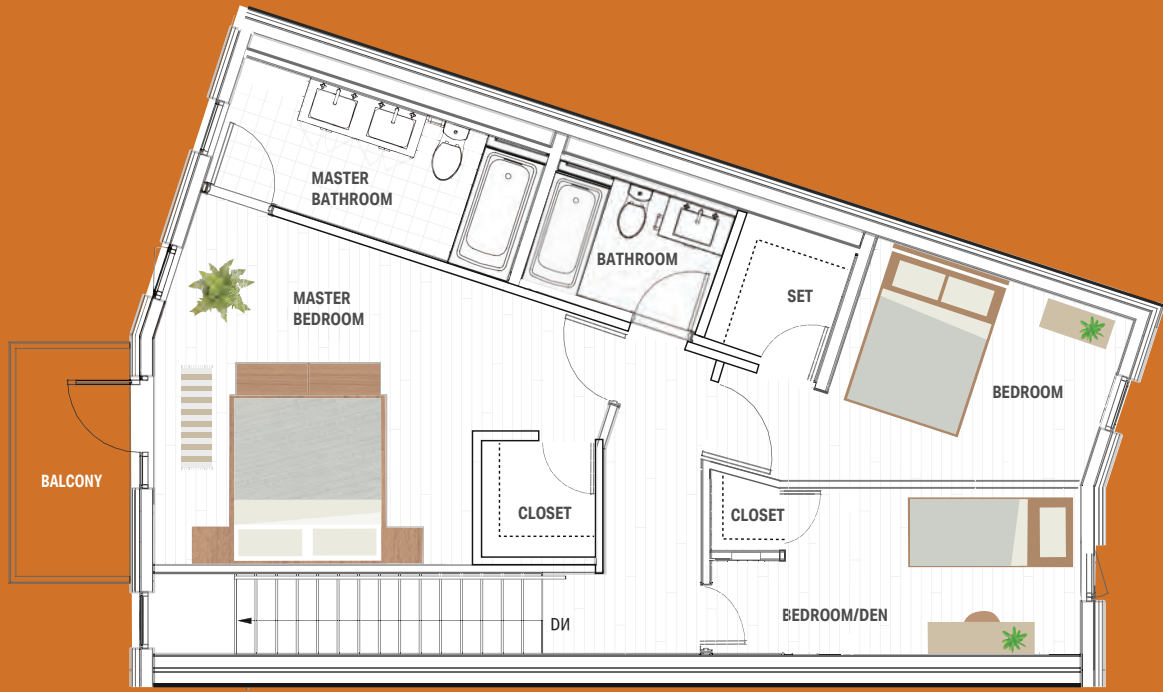


KEY PLAN

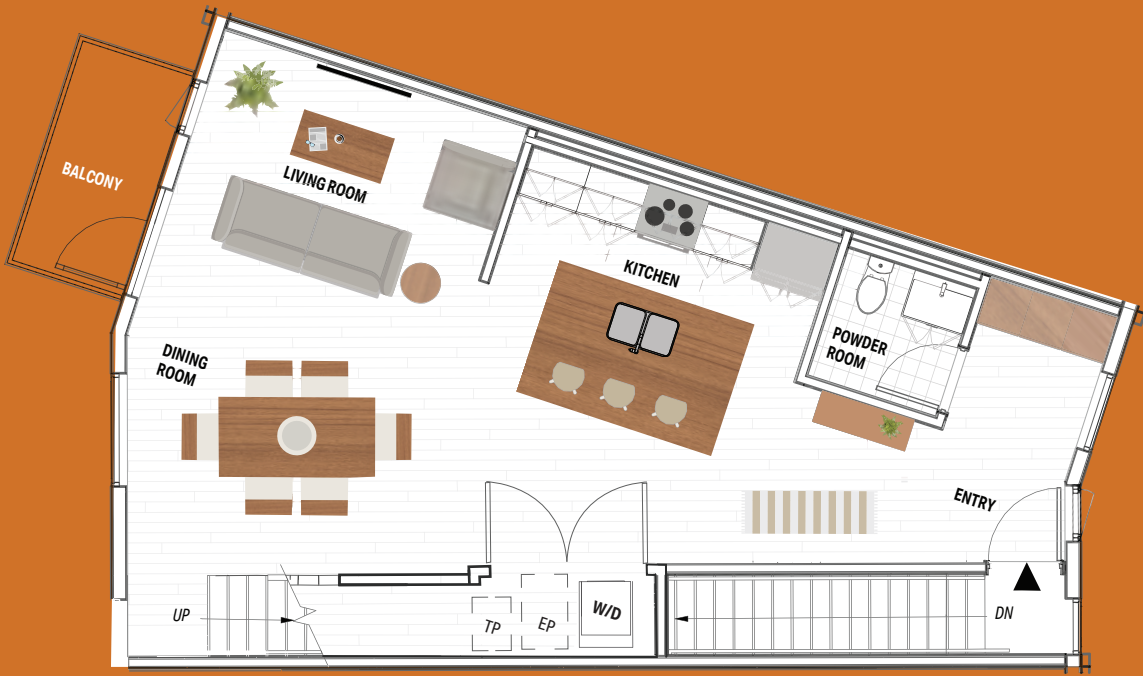
THE BEECH / AREA: 1755 FT² / EXTERIOR: 96 FT²

Interior and exterior configuration varies by unit and specifications are subject to change without notice. See a sales representative for further information. Actual usable floor space may vary from the stated floor area.

FOURTH FLOOR



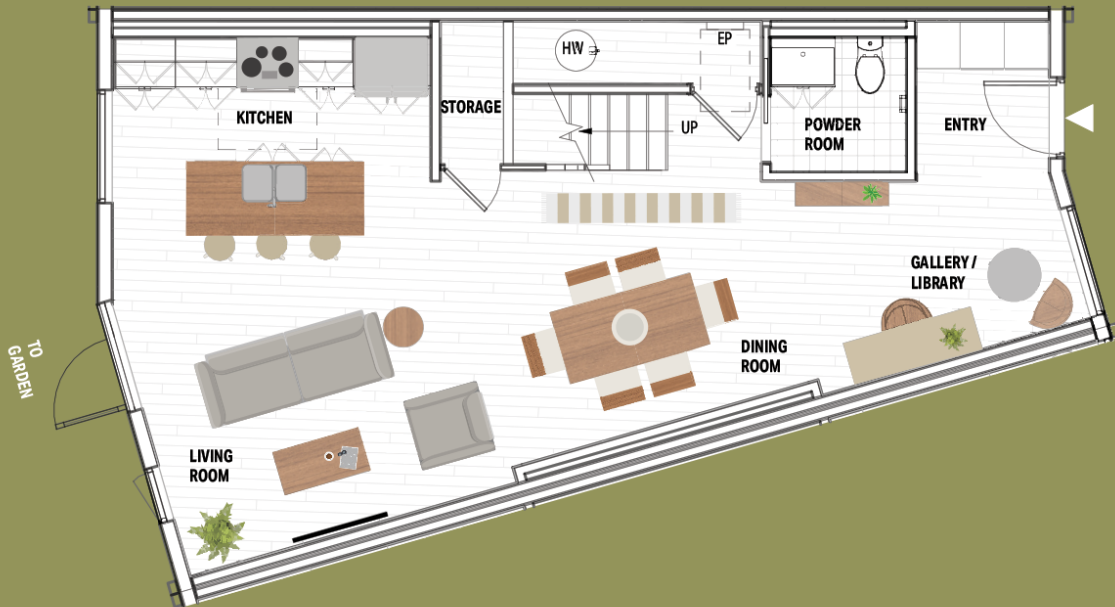
THIRD FLOOR



Sycamore

THREE BEDROOM TOWNHOUSE

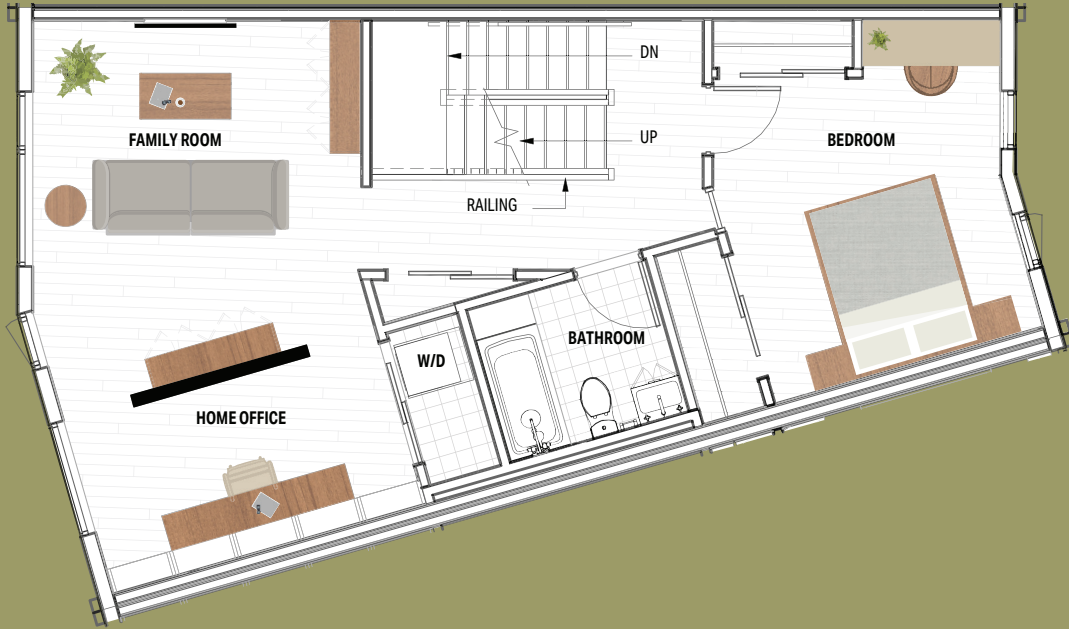
GROUND FLOOR



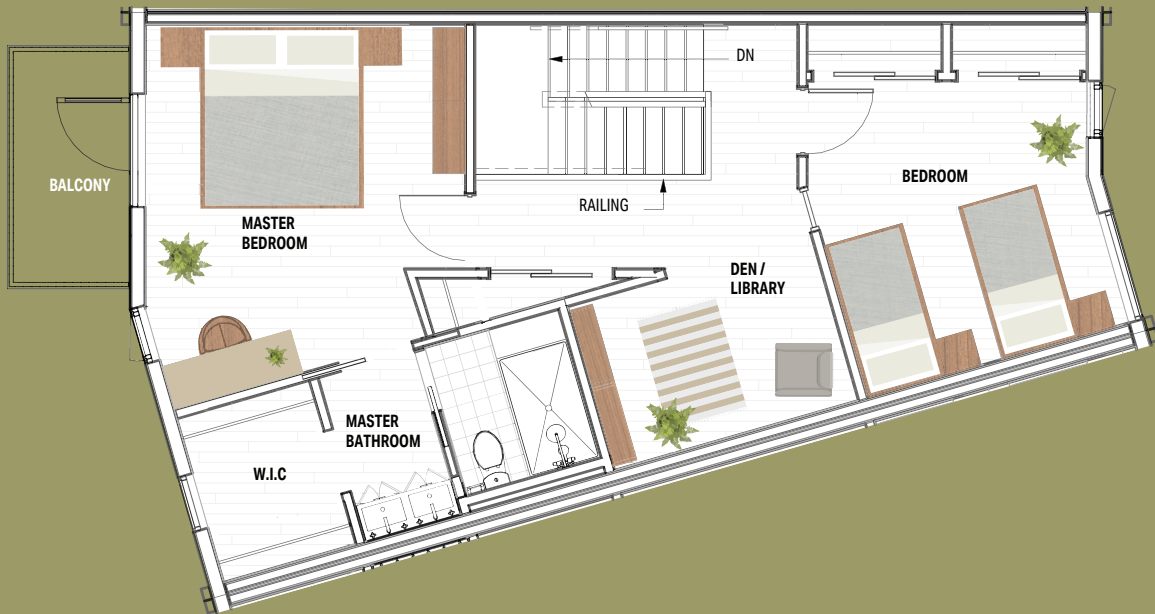
AREA: 2229 FT² / EXTERIOR: 212 FT²

Interior and exterior configuration varies by unit and specifications are subject to change without notice. See a sales representative for further information. Actual usable floor space may vary from the stated floor area.

SECOND FLOOR



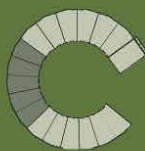
THIRD FLOOR



Ironwood

THREE BEDROOM TOWNHOUSE

GROUND FLOOR (GARDEN SUITE OPTION)



KEY PLAN

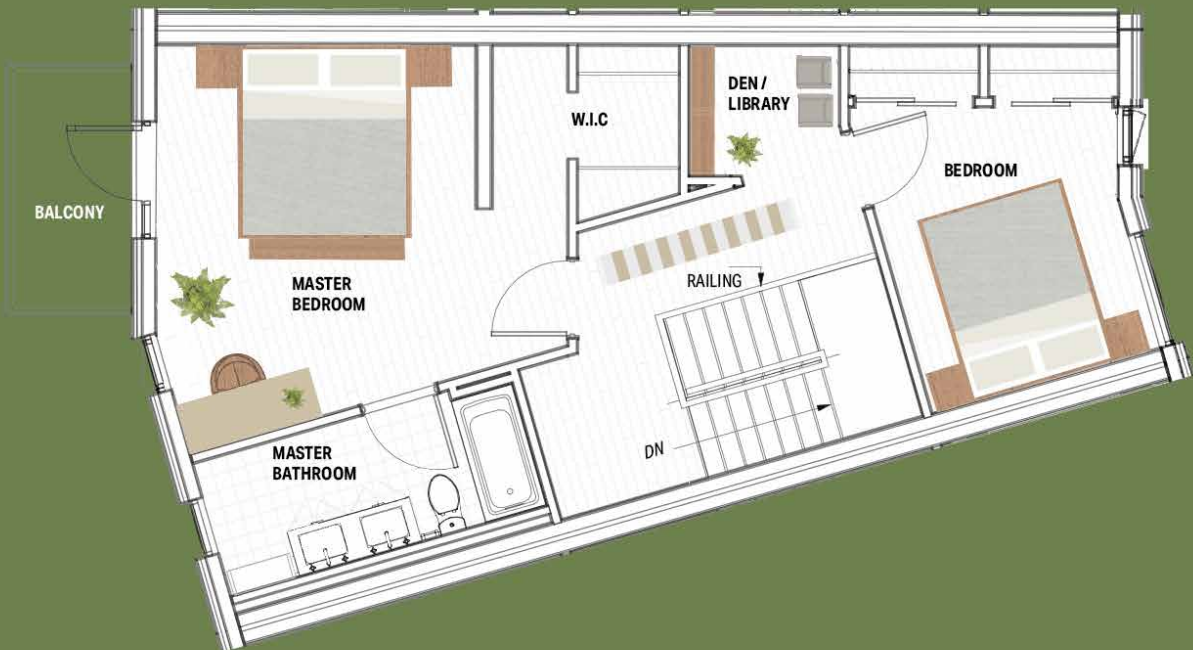
THE IRONWOOD / AREA: 2229 FT² / EXTERIOR: 212 FT²

Interior and exterior configuration varies by unit and specifications are subject to change without notice. See a sales representative for further information. Actual usable floor space may vary from the stated floor area.

SECOND FLOOR (SECOND STORY ENTRANCE)



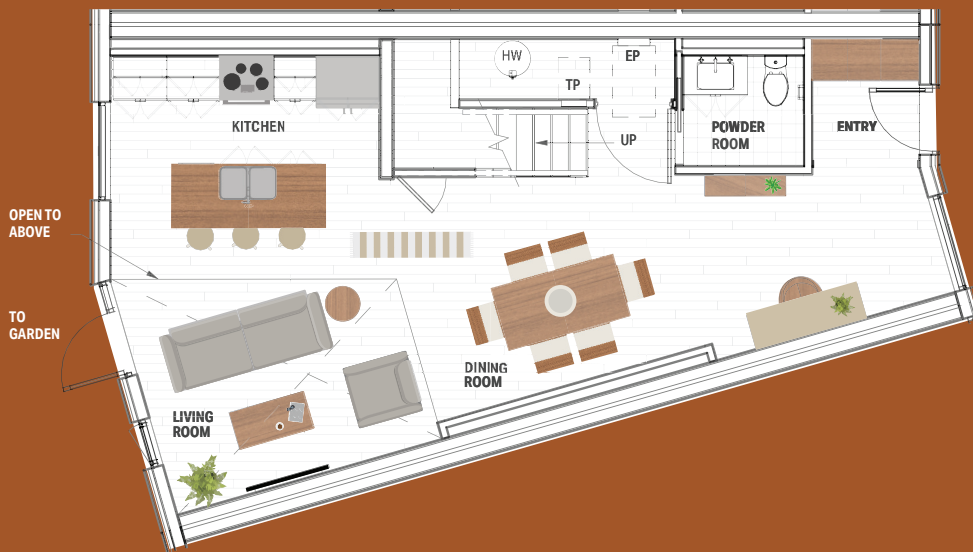
THIRD FLOOR



Maple

THREE BEDROOM TOWNHOUSE

GROUND FLOOR

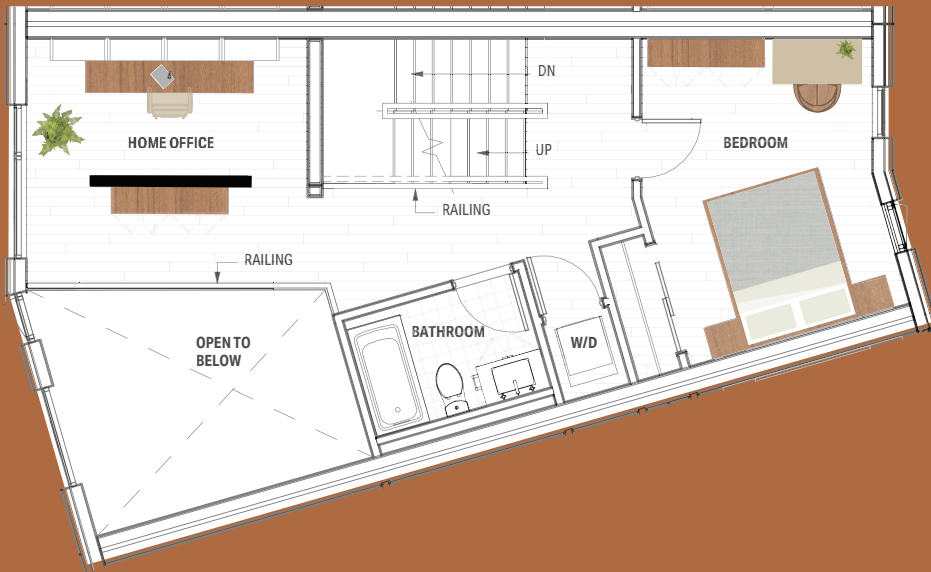


KEY PLAN

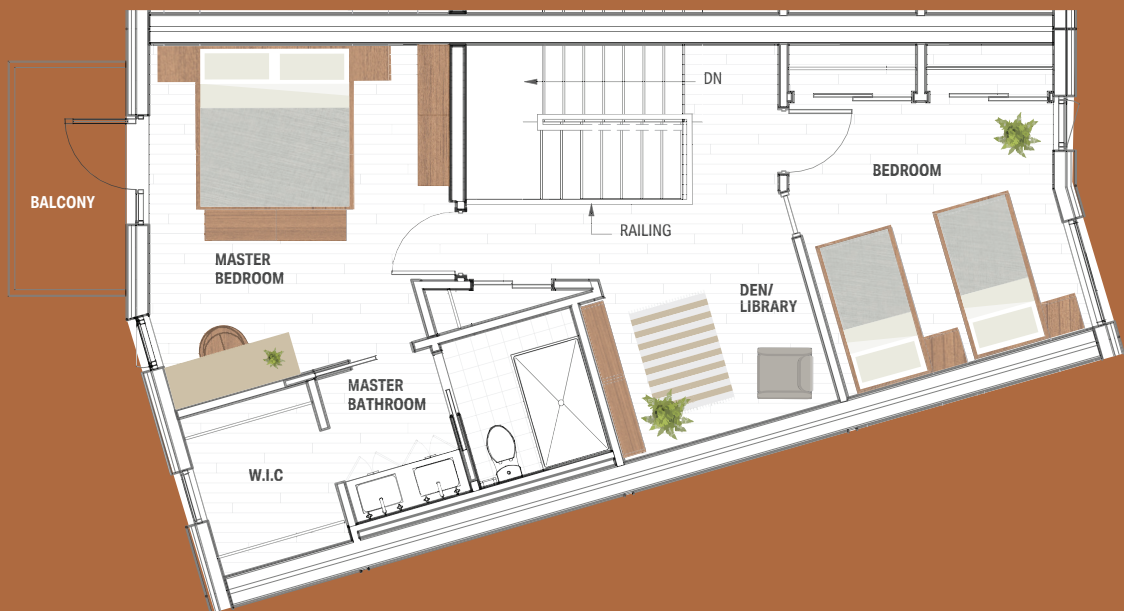
THE MAPLE / AREA: 2229 FT² / EXTERIOR: 212 FT²

Interior and exterior configuration varies by unit and specifications are subject to change without notice. See a sales representative for further information. Actual usable floor space may vary from the stated floor area.

SECOND FLOOR (LOFT OPTION)



THIRD FLOOR





EVE-Car™

EVE Park's Exclusive Car Share Program





Just Drive EVE-Car™ will get you there.

Tailpipe emissions count for about 40% of the average Canadian's annual carbon emissions. By driving a Tesla EV, you eliminate all of that. By participating in a Tesla EV car-share, you are also spreading the embedded carbon of building a new vehicle across more than one driver. With EVE-Car™ you can go places, leave the guilt behind, and arrive in style.

Parking, regular preventive maintenance and overnight charging are all included. There are four different plans – to help you tailor your EVE-Car™ experience around your driving needs. No matter if it is a regular rental or an hourly rental for a family trip, your vehicle will be ready to go when you are!

EVE-Car™ subscribers will also have access to a fleet of Pedego eBikes. These high-end city-bike style e-bikes will be parked, maintained and charged overnight for EVE-Car™ subscribers who want to blend some more active transportation and fun into the way they get around.

More information is available at:
evepark.ca/eve-car



Represented by
Bonnie Baker Hodgins, Broker
Susie Beasley Kim, Realtor™
Rebecca Walker, Realtor™
Sutton Group - Select Realty Inc.

P: 519-433-4331 | **E:** evemark@sutton.com

www.evemark.ca