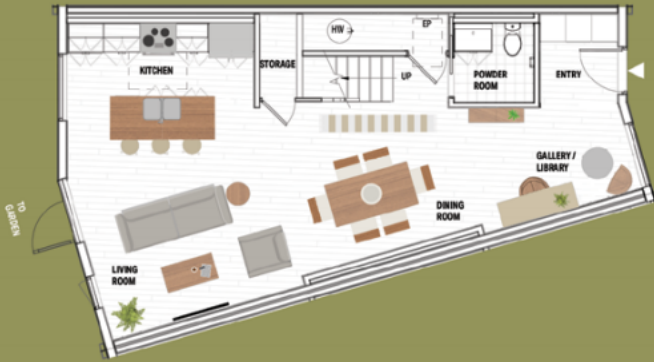
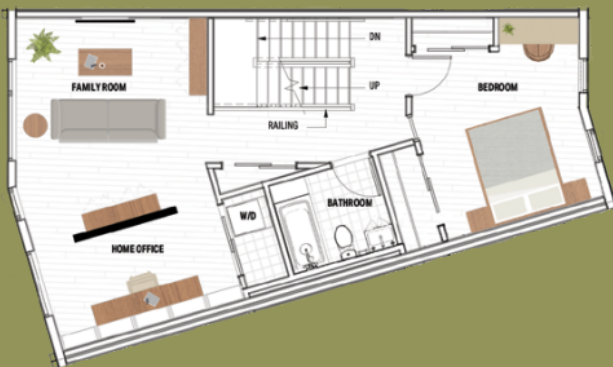


# Sycamore

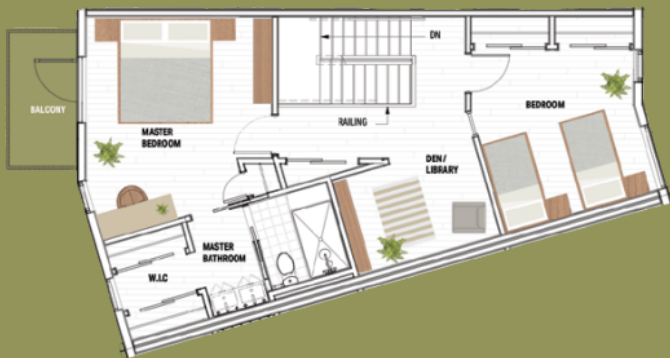
Ground Floor



Second Floor



Third Floor



## Ground Floor Suite

3 BR + Den | 2.5 Bath

Live the luxury of a full three floor suite all to yourself, with no other units located below or above you. The Sycamore has its very own back garden space and a top floor balcony. With additional spaces for a family room, home office and open den, this unit provides plenty of room to sleep, work and enjoy.

## Starting Price Structure

Sycamore - \$1,164,000  
Condo Fees - \$439.79 (\$0.19/sq ft)

Area: 2229 ft<sup>2</sup> | Exterior: 212 ft<sup>2</sup>

360 Panorama: [evepark.ca/sycamore](http://evepark.ca/sycamore)

[evepark.ca](http://evepark.ca) | 226- 213-3661 | [info@evepark.ca](mailto:info@evepark.ca)