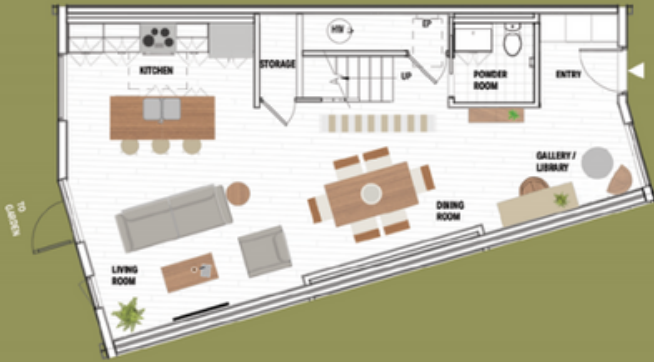


Sycamore

Ground Floor



Second Floor



Third Floor



Ground Floor Suite

3 BR | 2.5 Bath

Live the luxury of a full three floor suite all to yourself, with no other units located below or above you. The Sycamore has its very own back garden space and a top floor balcony. With additional spaces for a family room, home office and open den, this unit provides plenty of room to sleep, work and enjoy.

Starting Price Structure

Sycamore - \$1,164,000
Condo Fees - \$439.79 (\$0.19/sq ft)

Area: 2229 ft² | Exterior: 212 ft²

360 Panorama: evepark.ca/sycamore

evepark.ca | 519-433-4331 | evepark@sutton.com