



Welcome to Evolved Living

# About EVE Park

Imagine a residential community designed around abundant green energy. Where two-car garages do not separate you from your neighbours. Where community greenspace is prioritized over driveways and fenced yards. Where you're living in a park, not a parking lot.

**EVE - Electric Vehicle Enclave - Park** is a new kind of residential community that shows us how we can live in a way that changes our relationship with the planet and with one another. The project will be built in the "forest city" of London, Ontario within the greater West5 community, one of North America's largest net-zero energy communities. It is connected to the Thames River park area, with access to many biking trails, golf courses — ideal for an active, outdoor lifestyle.

While other developments have sought out green energy solutions, EVE Park is revolutionary in its approach to community, its attention to exceptional quality of life, its inspiring design, its integration of nature and technology, and especially its forward-thinking approach to personal transportation.

*EVE Park is the first community of its kind:  
a net-zero energy community designed for the future.*

## 84 Units Total

---

**4**

**ONE BEDROOM UNITS**

*Woodfern*

**48**

**TWO BEDROOM UNITS**

*Bergamot, Indigo and Gooseberry  
ground floor, and Sumac  
elevated 2 bedrooms*

**32**

**THREE BEDROOM UNITS**

*Sycamore with Maple and  
Ironwood upgrades, and Beech  
elevated 3 bedrooms*

# Features & Finishes



**Sustainable,  
Natural & Non-Toxic  
Materials Throughout  
the Home**



**Choice of Finish  
Schemes Curated by  
Interior Designers**



**Certified  
Engineered Hardwood  
Flooring**



**Air-Tight Net-Zero  
Construction for  
Temperature & Pollution  
Management**



**Custom-Crafted  
Environmentally  
Friendly Kitchen &  
Bathroom Millwork**



**Under-Cabinet  
Kitchen Lighting**



**Canadian-Made  
Quartz Countertops &  
Coordinated Ceramic  
Tile Backsplashes**



**High-Speed Fiber  
to Each Suite. Download  
at 1.5Gbps.**



**Porcelain Tiling  
on Bathroom  
Floors & Walls**



**Modern  
Water-Saving  
Plumbing Fixtures**



**Smart & Energy  
Efficient Panasonic  
Panel-Ready  
Appliances**



**Smart Thermostat with  
Advanced Controls**



**Enhanced Connected  
Home Energy  
Management & Security  
Monitoring**

*Upgrade Option*



**Home  
Media Package**

*Upgrade Option*



**Healthy Home  
Package for  
Superior Air &  
Water Quality**

*Upgrade Option*



**Fresh Air Machines  
(ERVs) for Fresh &  
Filtered Air**



**LED Lighting with  
Smart In-Suite  
Switches**



**Large Energy-  
Efficient Windows  
for Abundant  
Natural Light**

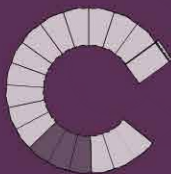


# Suites

Live well, lightly.

# Bergamot

TWO BEDROOM TOWNHOUSE



KEY PLAN

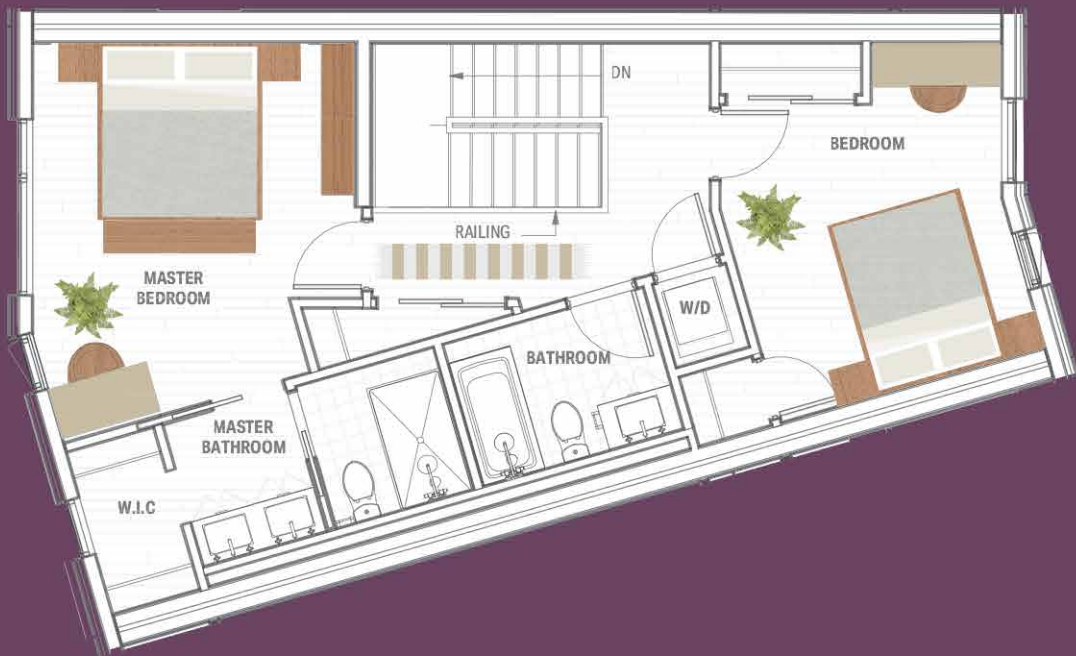
**AREA: 1486 FT<sup>2</sup> / EXTERIOR: 164 FT<sup>2</sup>**

Interior and exterior configuration varies by unit and specifications are subject to change without notice. See a sales representative for further information. Actual usable floor space may vary from the stated floor area.

GROUND FLOOR



SECOND FLOOR



# Gooseberry

TWO BEDROOM  
TOWNHOUSE

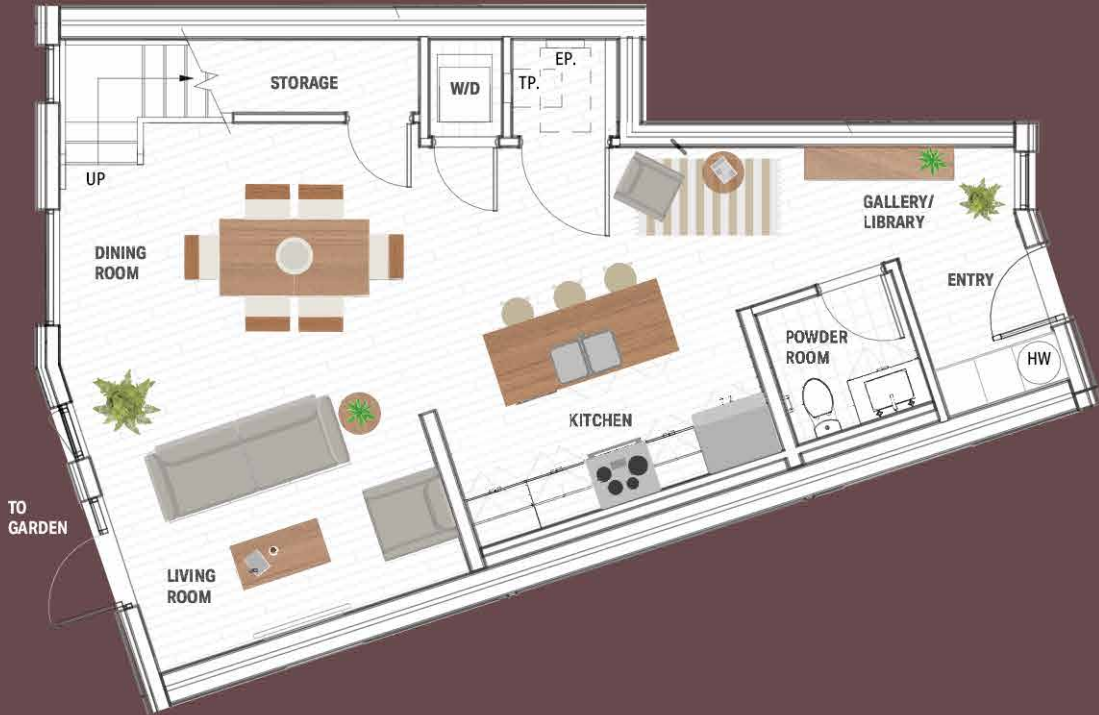


KEY PLAN

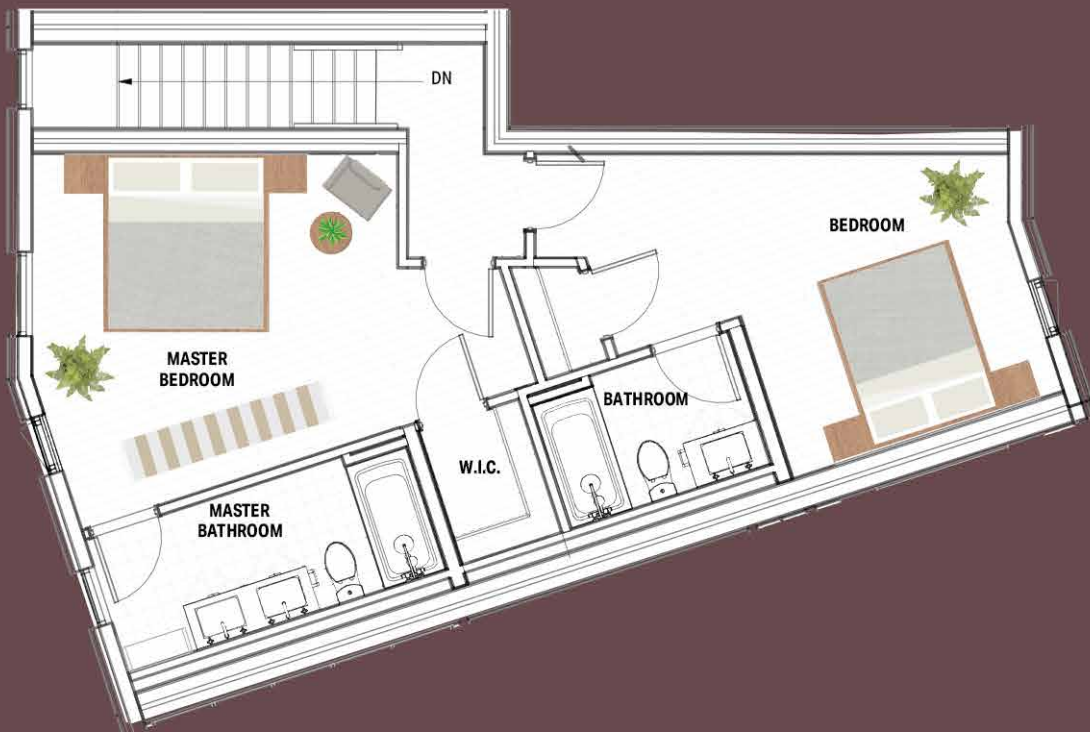
**AREA: 1498 FT<sup>2</sup> / EXTERIOR: 155 FT<sup>2</sup>**

Interior and exterior configuration varies by unit and specifications are subject to change without notice. See a sales representative for further information. Actual usable floor space may vary from the stated floor area.

GROUND FLOOR



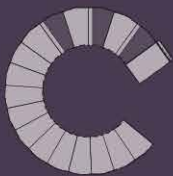
SECOND FLOOR





# Indigo

TWO BEDROOM TOWNHOUSE

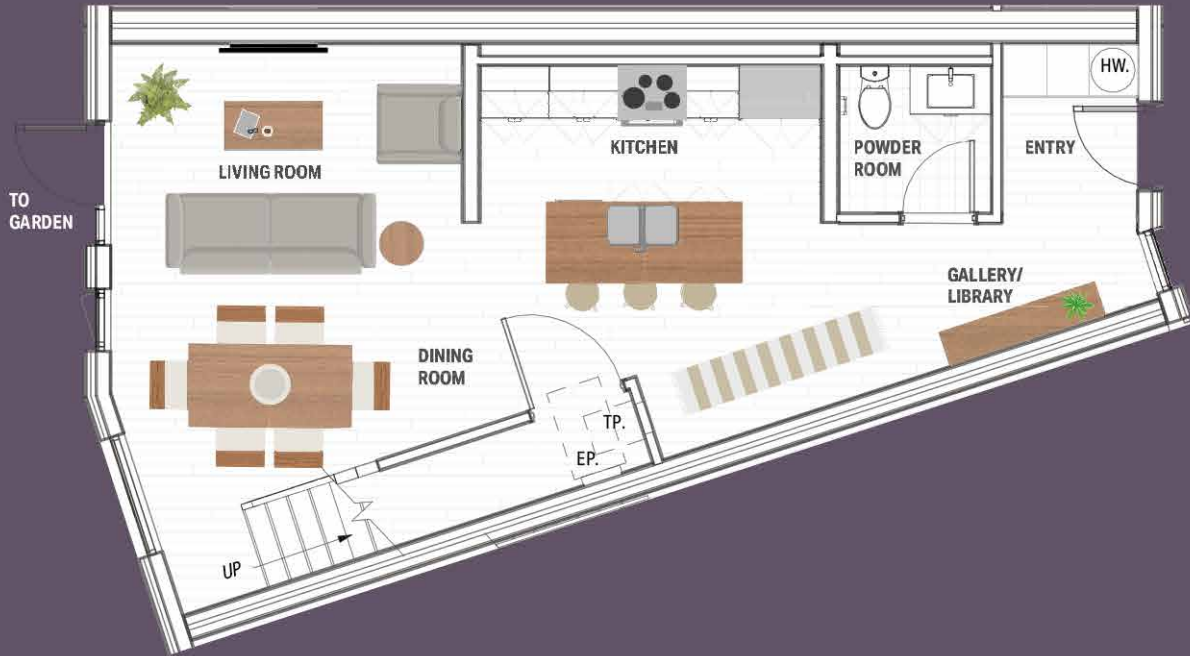


KEY PLAN

**AREA: 1312 FT<sup>2</sup> / EXTERIOR: 155 FT<sup>2</sup>**

Interior and exterior configuration varies by unit and specifications are subject to change without notice. See a sales representative for further information. Actual usable floor space may vary from the stated floor area.

GROUND FLOOR

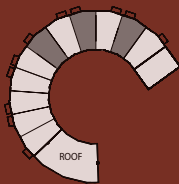


SECOND FLOOR



# Sumac

ELEVATED TWO BEDROOM TOWNHOUSE

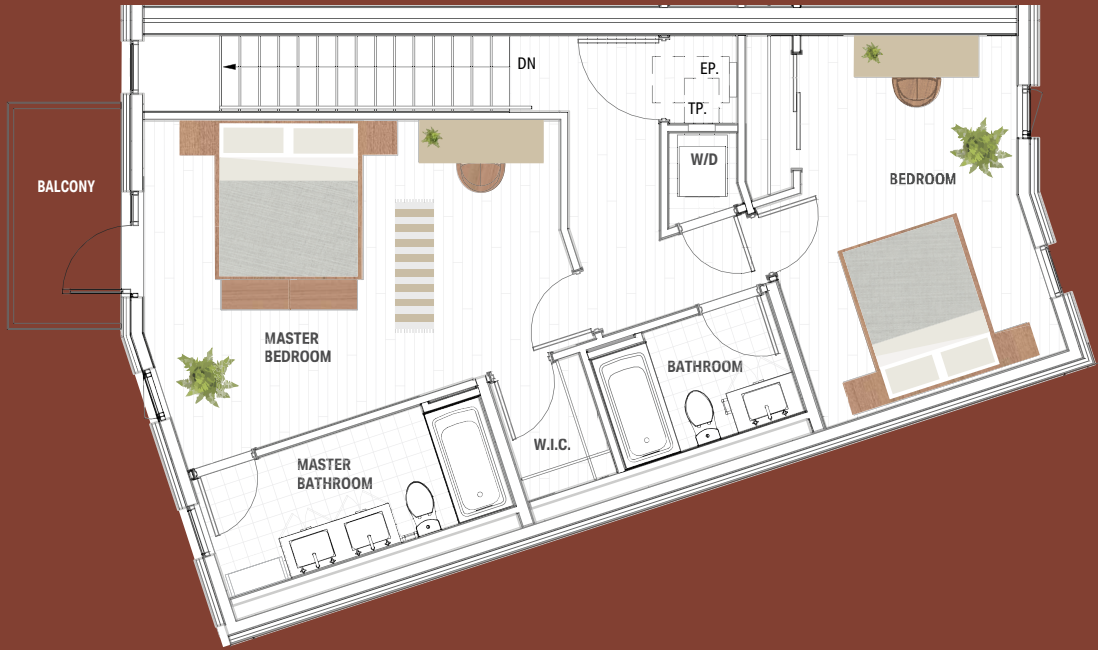


KEY PLAN

**THE SUMAC / AREA: 1850 FT<sup>2</sup> / EXTERIOR: 96 FT<sup>2</sup>**

Interior and exterior configuration varies by unit and specifications are subject to change without notice. See a sales representative for further information. Actual usable floor space may vary from the stated floor area.

## FOURTH FLOOR

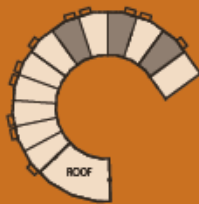


## THIRD FLOOR



# Beech

ELEVATED THREE BEDROOM TOWNHOUSE

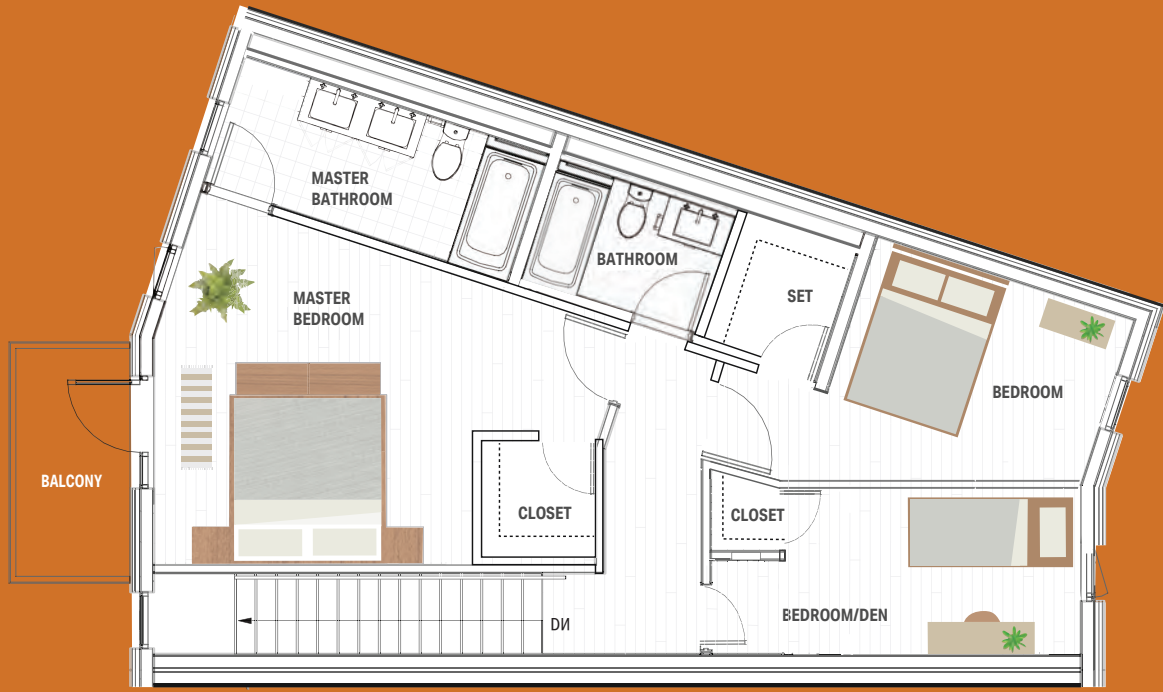


KEY PLAN

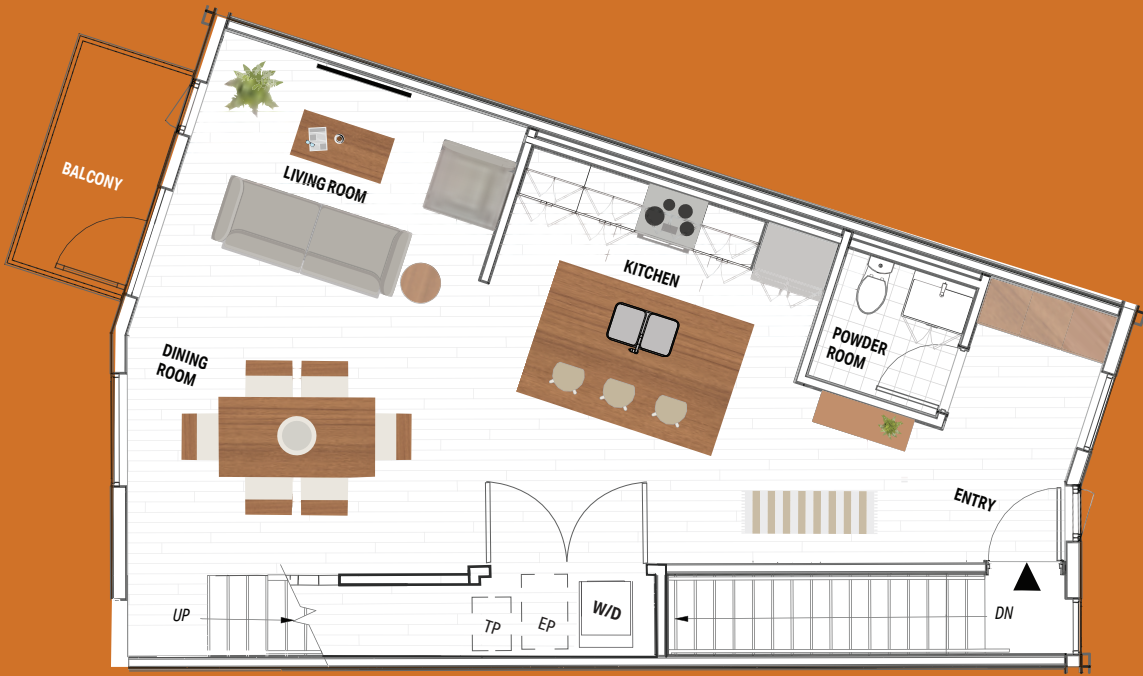
**THE BEECH / AREA: 1755 FT<sup>2</sup> / EXTERIOR: 96 FT<sup>2</sup>**

Interior and exterior configuration varies by unit and specifications are subject to change without notice. See a sales representative for further information. Actual usable floor space may vary from the stated floor area.

FOURTH FLOOR



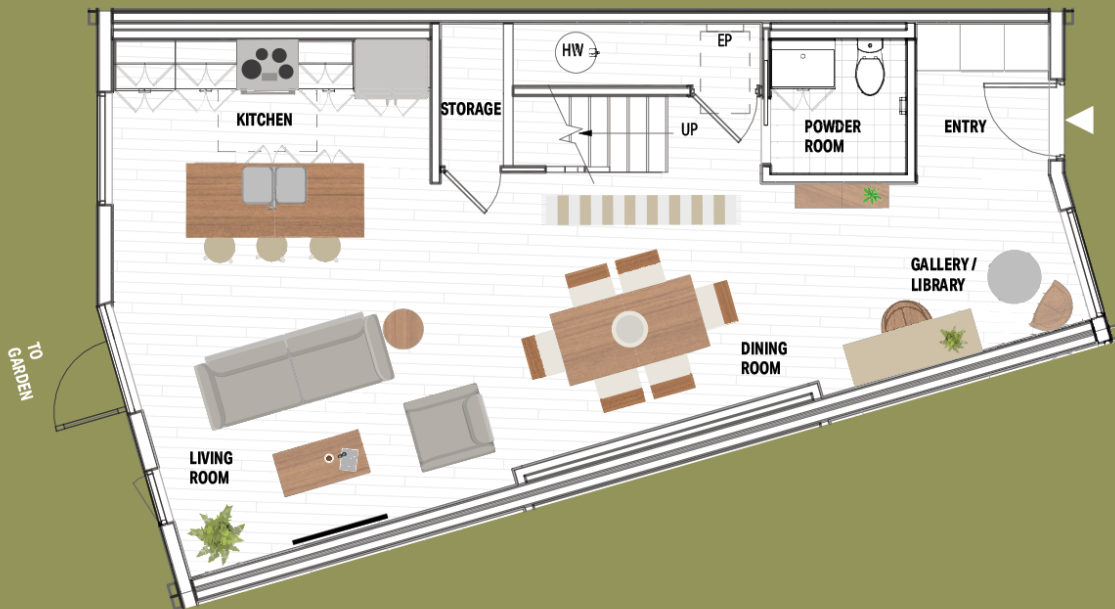
THIRD FLOOR



# Sycamore

## THREE BEDROOM TOWNHOUSE

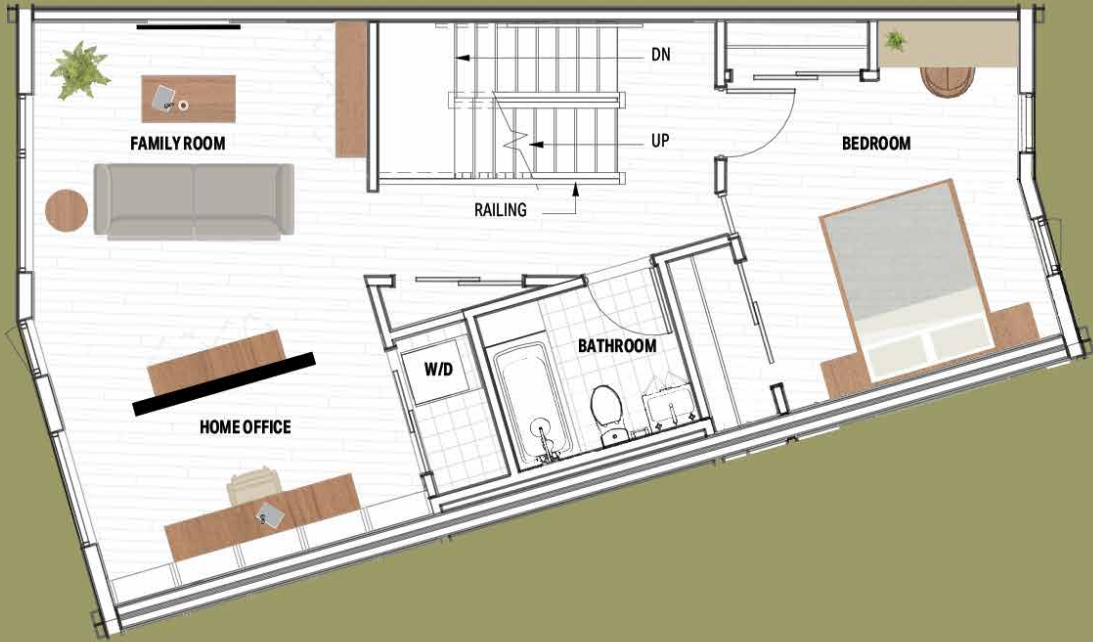
### GROUND FLOOR



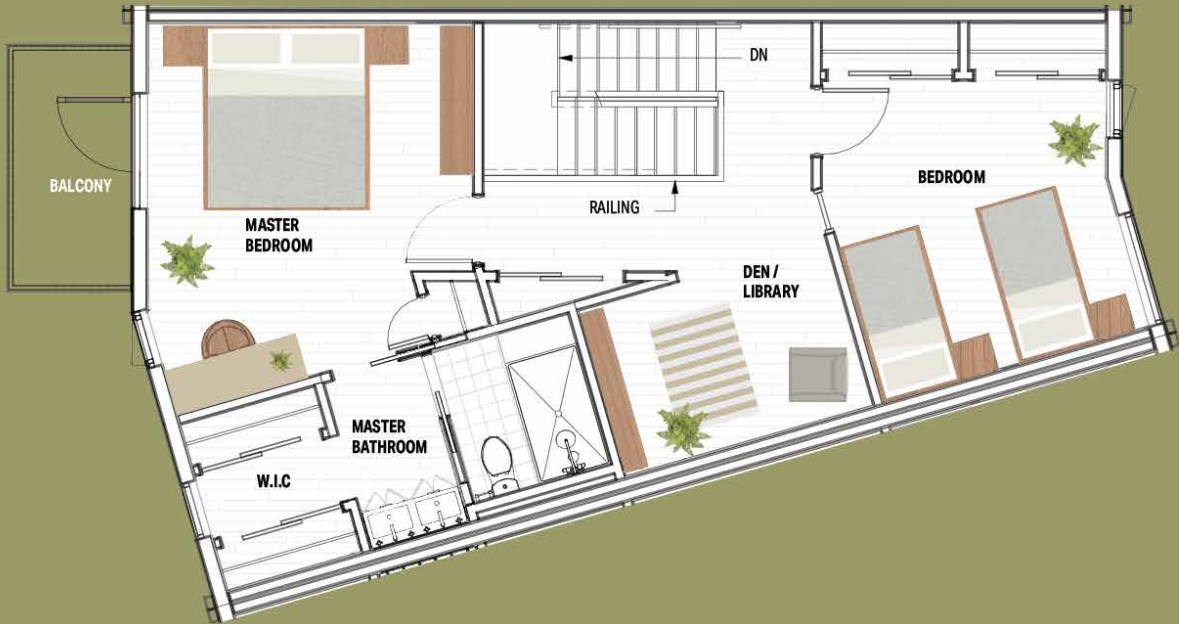
**AREA: 2229 FT<sup>2</sup> / EXTERIOR: 212 FT<sup>2</sup>**

Interior and exterior configuration varies by unit and specifications are subject to change without notice. See a sales representative for further information. Actual usable floor space may vary from the stated floor area.

SECOND FLOOR



THIRD FLOOR

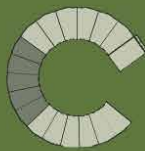
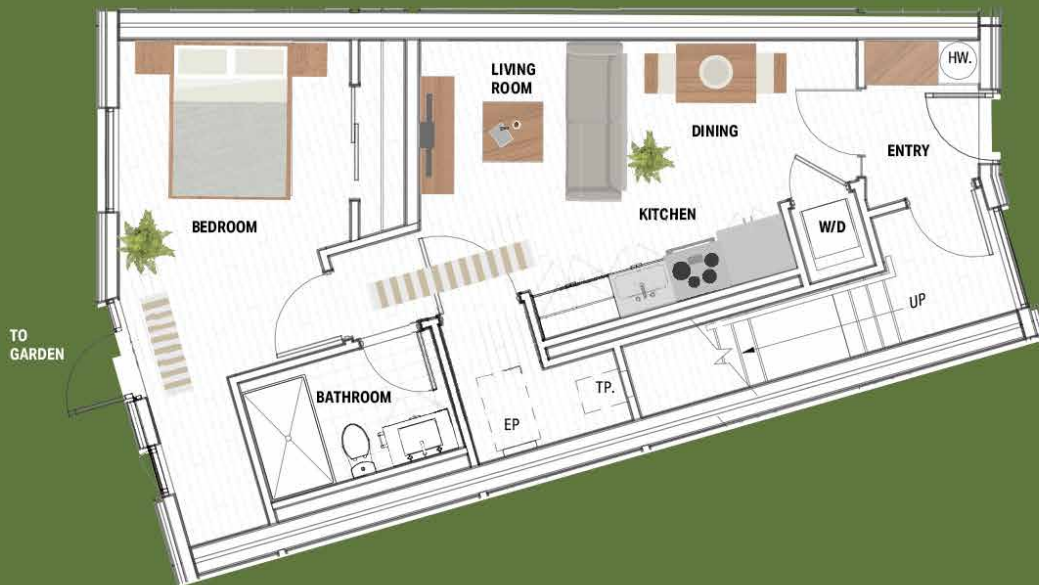




# Ironwood

## THREE BEDROOM TOWNHOUSE

### GROUND FLOOR (GARDEN SUITE OPTION)



KEY PLAN

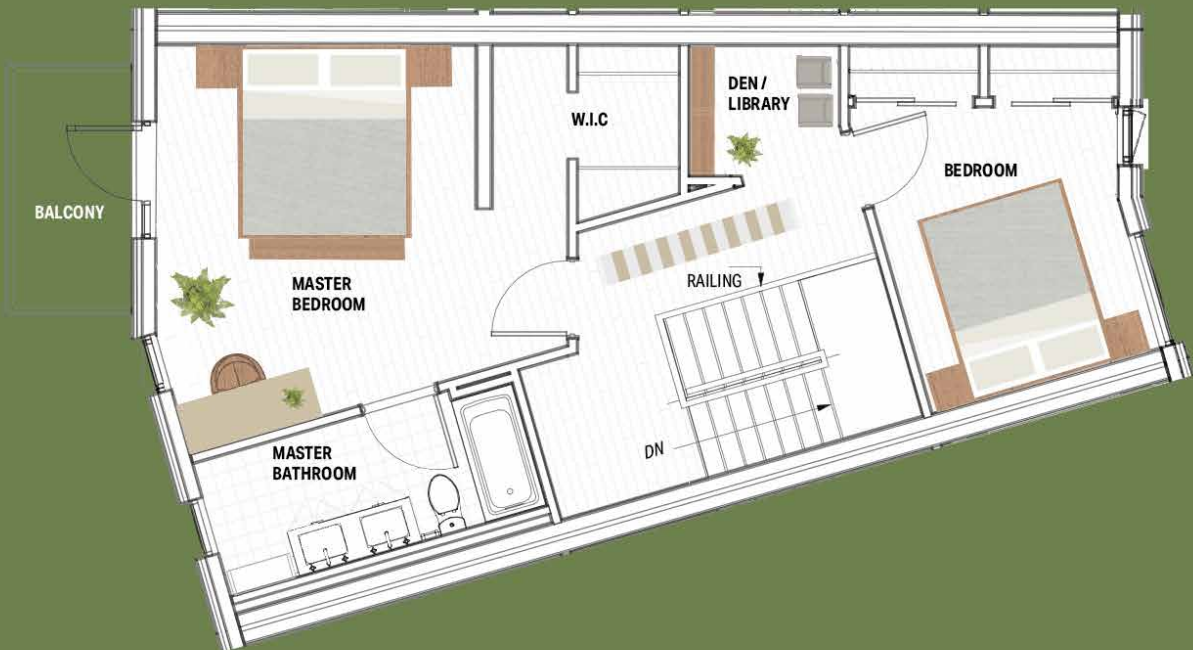
**THE IRONWOOD / AREA: 2229 FT<sup>2</sup> / EXTERIOR: 212 FT<sup>2</sup>**

Interior and exterior configuration varies by unit and specifications are subject to change without notice. See a sales representative for further information. Actual usable floor space may vary from the stated floor area.

SECOND FLOOR (SECOND STORY ENTRANCE)



THIRD FLOOR





# EVE-Car™

EVE Park's Exclusive Car Share Program





# Just Drive EVE-Car™ will get you there.

Tailpipe emissions count for about 40% of the average Canadian's annual carbon emissions. By driving a Tesla EV, you eliminate all of that. By participating in a Tesla EV car-share, you are also spreading the embedded carbon of building a new vehicle across more than one driver. With EVE-Car™ you can go places, leave the guilt behind, and arrive in style.

Parking, regular preventive maintenance and overnight charging are all included. There are four different plans – to help you tailor your EVE-Car™ experience around your driving needs. No matter if it is a regular rental or an hourly rental for a family trip, your vehicle will be ready to go when you are!

EVE-Car™ subscribers will also have access to a fleet of Pedego eBikes. These high-end city-bike style e-bikes will be parked, maintained and charged overnight for EVE-Car™ subscribers who want to blend some more active transportation and fun into the way they get around.

More information is available at:  
[evepark.ca/eve-car](https://evepark.ca/eve-car)



Represented by

Angee George

Myla George

Tyson George

The Realty Firm Inc.

**P:** 519.614.2621 | **E:** [info@evepark.ca](mailto:info@evepark.ca)

[www.evepark.ca](http://www.evepark.ca)